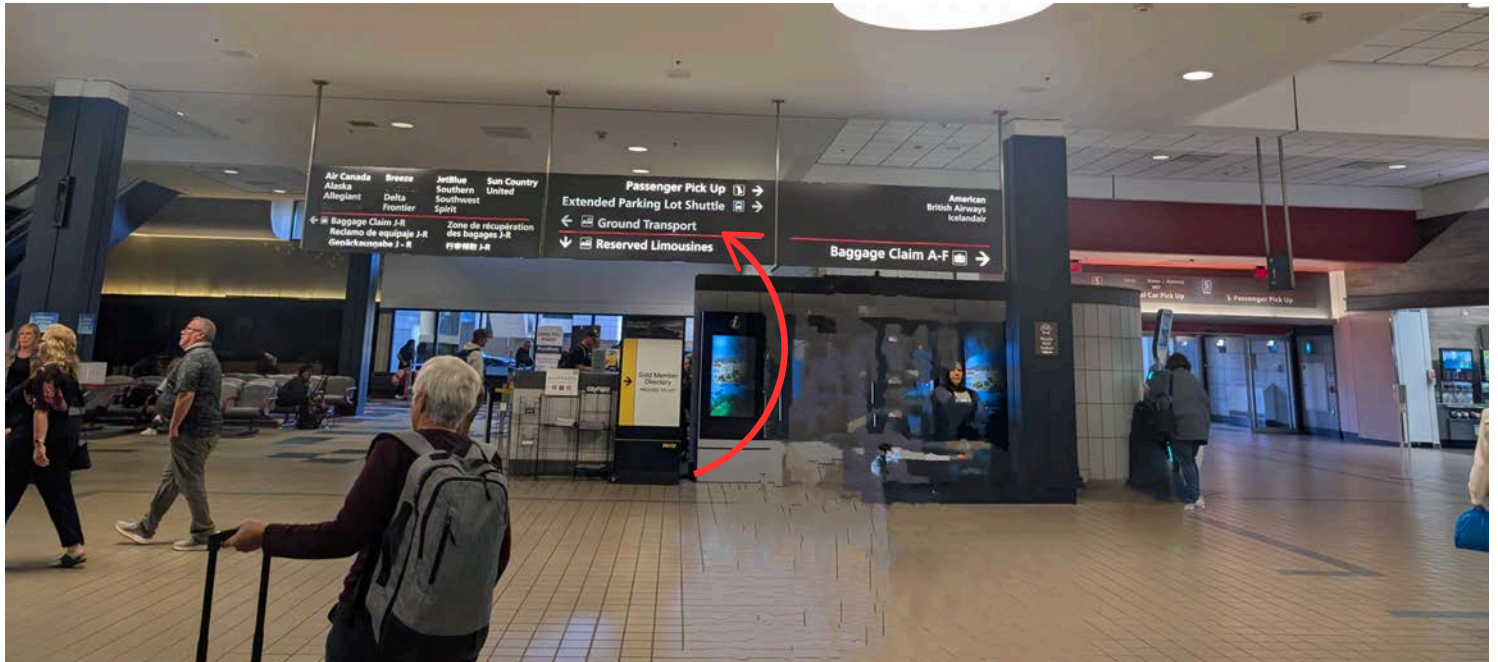


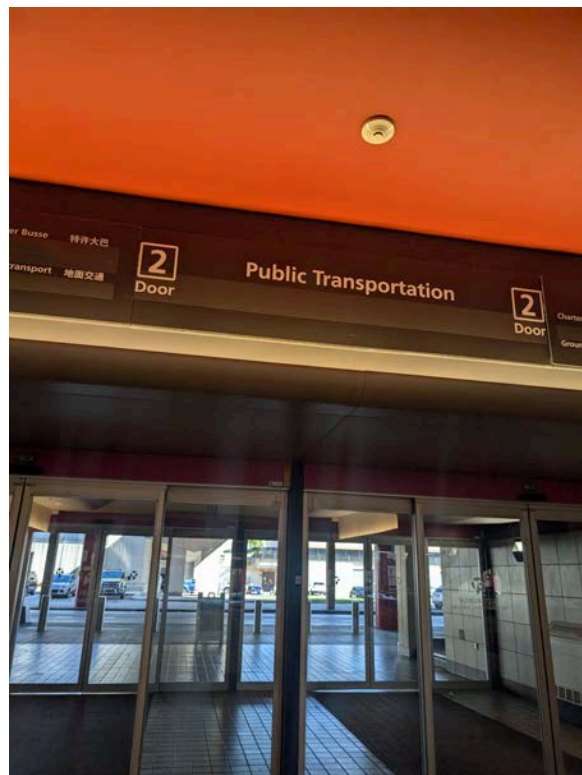
# Navigating PRT Airport Flyer 28x to Maverick Liberty

[Link to 28X Schedule](#) & [Link to 71B Schedule](#)

1. After exiting tram, follow signs to Ground Transport, which will be near the baggage claim area (J-R).



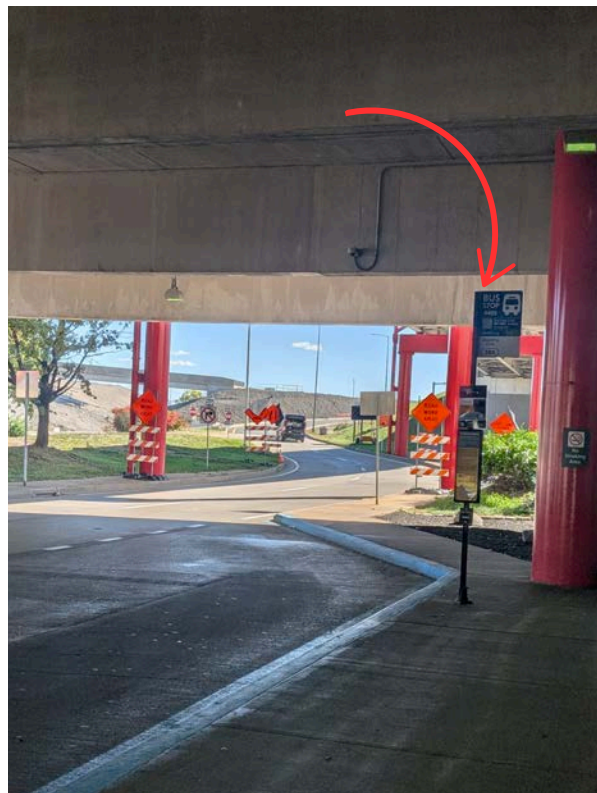
2. Follow the corridor to Door 2, which is for Public Transportation



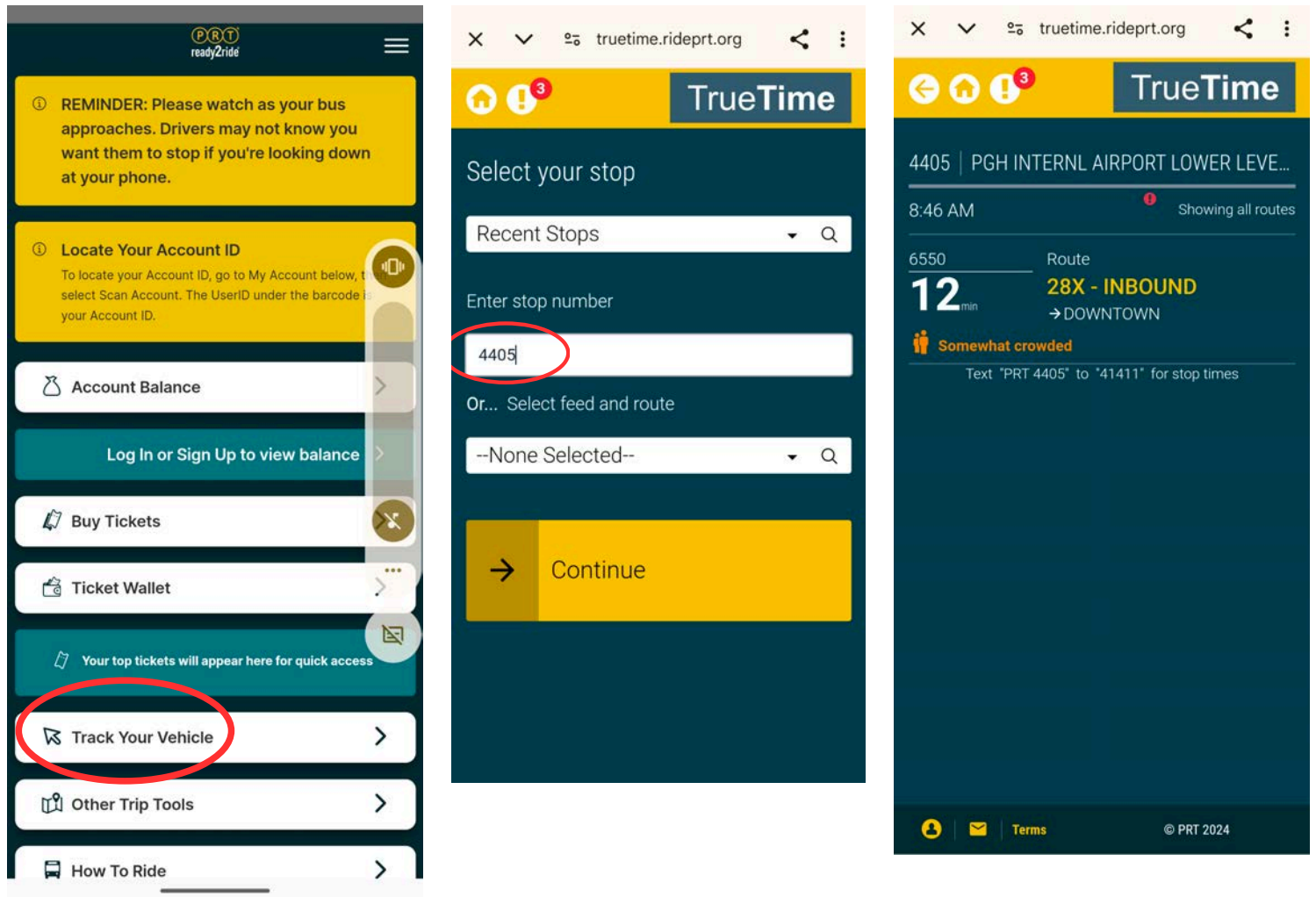
3. You will know you are in the right area when you exit because you will see Charter Buses/Public buses marked on the red pole



4. You will also see a PRT Bus Stop sign (this is where the bus will stop)



5.You can track the location of the next bus by using your Port Authority Ready to Ride app. On the main page, click “Track your Vehicle” and “Enter Stop Number” and utilize 4405. You can also text PRT 4405 to 41411



6.You should expect to be on the bus 1- 1.5 hour.

Maverick by Kasa

120 S Whitfield St, Pittsburgh, PA 15206

There is no direct bus to your hotel. I would suggest using google maps when you land, because there are at least 5 different bus routes you can take (depending on the time, one might be better than the other). Below is just one option which allows you to get on the **28x**, stay at the same stop, and transfer to the **71B**, which will drop you with a 2 minute walk to your hotel! For the 71B transfer, follow below instructions

1. Exit 28x Bus at Fifth Ave + Amberson (Stop ID 1178).





2.Wait at stop Fifth Ave + Amberson (Stop ID 1178) for the **71B Highland Park**. You can utilize the track your vehicle to see when it comes next.

3.It should be 14 Stops (about 10 minutes) to stop **Highland + Penn**. From there you will have a 2 minute walk(see below). You will see large church near your stop.

