



University of  
Pittsburgh

Swanson School  
of Engineering



# Transportation Forum 2025

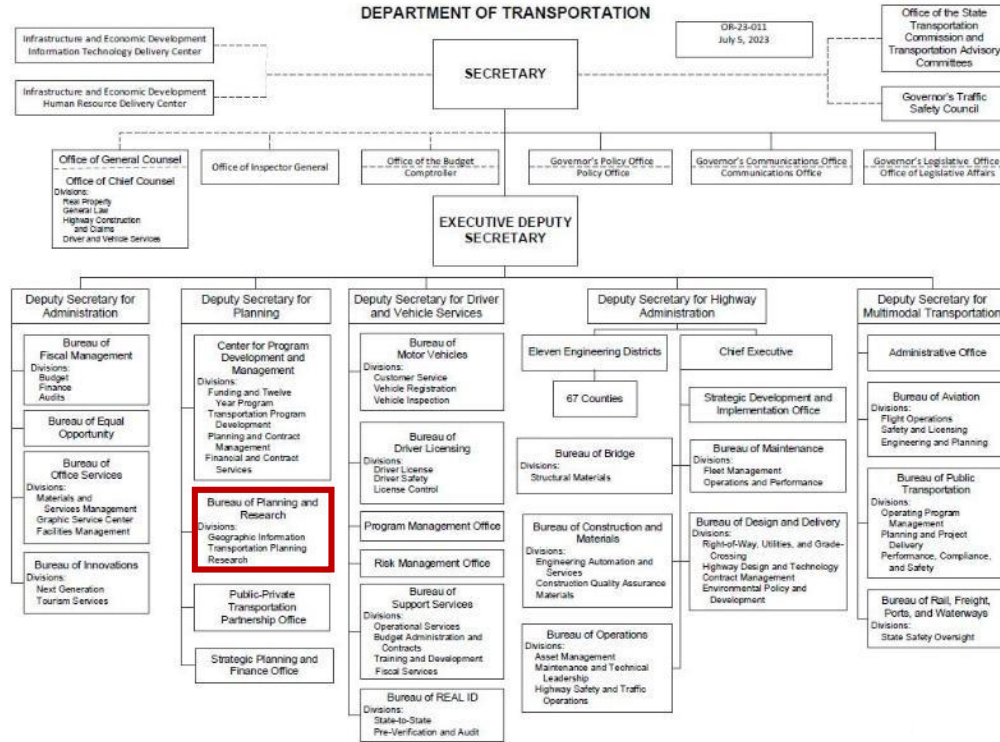
## PennDOT Research Update



Pennsylvania

Department of Transportation

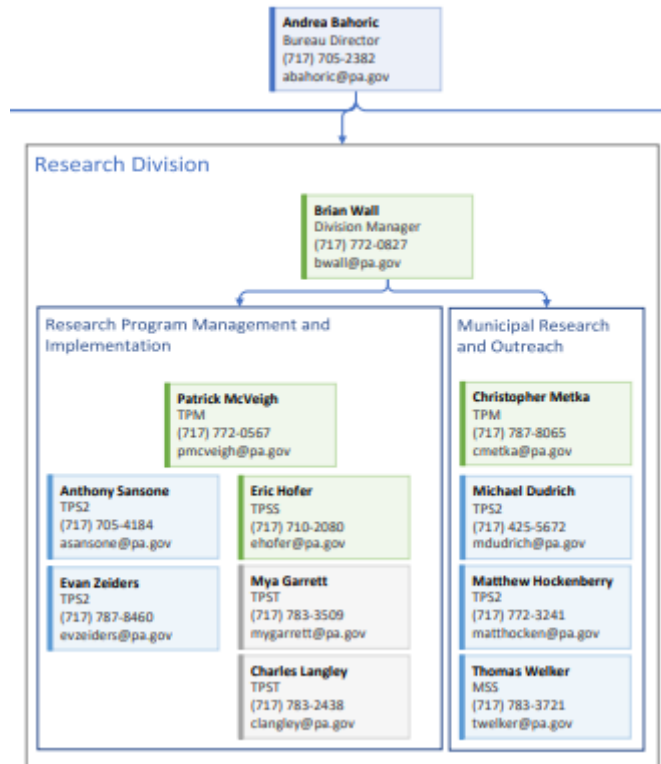
# Bureau of Planning and Research



# Bureau of Planning and Research

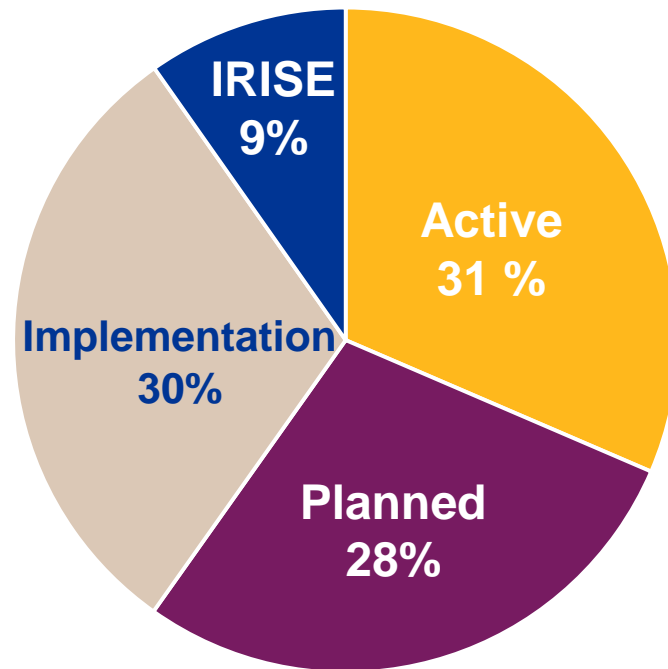
Resource Development & Management Section	Geographic Information Division	Transportation Planning Division	Research Division
Created June 2024	Cartographic Products	Field Operations	Research Program
Budgeting	Geospatial Data	WIM Program	Research Implementation
Procurement	Cartographic Info.	Traffic Analysis	Pooled Fund/NCHRP
Administration		CAVC/ATR Program	LTAP
Contracting		Performance Reporting	PennDOT Connects
Invoicing			New Products Eval.

# Research Division



# Research by the Numbers

- Budget: \$8 Million
- Full Time Staff: 6
- Partnerships: 36
- Projects: 47
- LTAP: \$1.75 Annually
- TRB/NCHRP: ~\$2.5 Million Annually
- Pooled Fund Projects: 36
- Pooled Fund Contributions: ~\$3.8 Million



**~\$11.5 Million**

# Research Program: Problem Statements

- Problems Statements Due: April 14<sup>th</sup>
- Problems Statements Review: April-May
- Research Program Approval: June
- Research Program Initiated: July

## Research Categories

- Policy Studies
- Design & Testing
- Construction
- Materials
- Environmental
- Maintenance
- Highway Safety
- Planning Studies
- Multimodal

# Implementation

- Technical Advisor Recommendation
- Desired Outcome
- Activity Definition
- Champion Identification
- Audience Identification
- Cost/Duration

# Research Implementation Projects

Project Titles	Status
A Guide to Demonstration Projects in PA (Pitt CSTI)	10%
Early Opening of Concrete Pavements to Traffic (Pitt IRISE)	ECMS Proposal Evaluation
Material Compatible Repairs (MCRs) for Concrete Pavements and Bridge Decks (Pitt IRISE)	ECMS Proposal Evaluation
Reducing the Cost and Facilitating Broader Adoption of Ultra-High-Performance Concrete (UHPC) in Pennsylvania Bridges (Penn State CIAMTIS UTC)	ECMS Proposal Evaluation
Research Tech Transfer Assistance	ECMS Proposal Evaluation



# FREE: Municipal Resources



Pennsylvania  
**Department of Transportation**  
Local Technical Assistance Program  
[www.pa.gov/penndot](http://www.pa.gov/penndot)

# Contact Information

**Brian Wall** | Research Division Manager

PA Department of Transportation | Bureau of Planning and Research

400 North Street, 6<sup>th</sup> Floor | Harrisburg, PA 17120

Phone: 717.772.0827 | Email: [bwall@pa.gov](mailto:bwall@pa.gov)

[www.pa.gov/pennidot](http://www.pa.gov/pennidot)

CONNECT WITH PENNDOT

[Facebook](#) | [X](#) | [Instagram](#) | [YouTube](#) | [LinkedIn](#)



University of  
**Pittsburgh**

Swanson School  
of Engineering