

Transportation Forum 2025: Putting Research Into Practice

Mark Compton, CEO, PA Turnpike Commission



March 19, 2025

The PA Turnpike Commission is more than a roadway.

- A billion-dollar enterprise driving our state and national economies.
- Generates, collects, and manages \$1.8 billion annually.





565+
Miles



140
Facilities



856
Bridges



5
Tunnels



NEARLY
90
Interchanges



1,400
Employees



STRATEGIC PLAN 2025-2029 FRAMEWORK

VISION

To be a leader in mobility services at the forefront of innovation in transportation, safety and customer experience.

MISSION

To operate a safe, reliable, customer-valued toll road system that supports national mobility and commerce.

VALUES



**SAFETY
ALWAYS**



**COMMUNICATE
OPENLY**



**CUSTOMER
DRIVEN**



**RESPONSIBILITY
MATTERS**



**TEAMWORK
DELIVERS**



**ADVANCING
EXCELLENCE**

GOALS

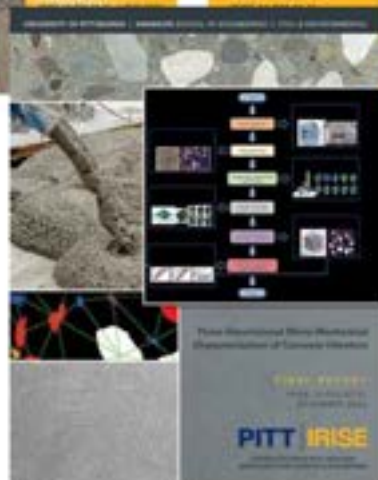
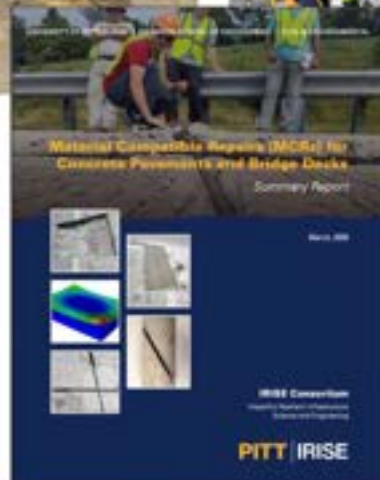
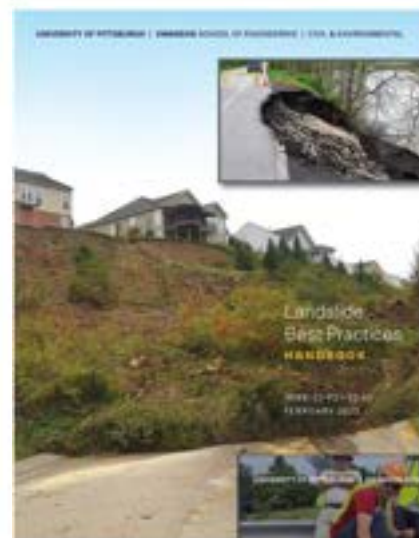
CONNECTION

CULTURE

GROWTH

SAFETY

STEWARDSHIP





Digital Twin Technology



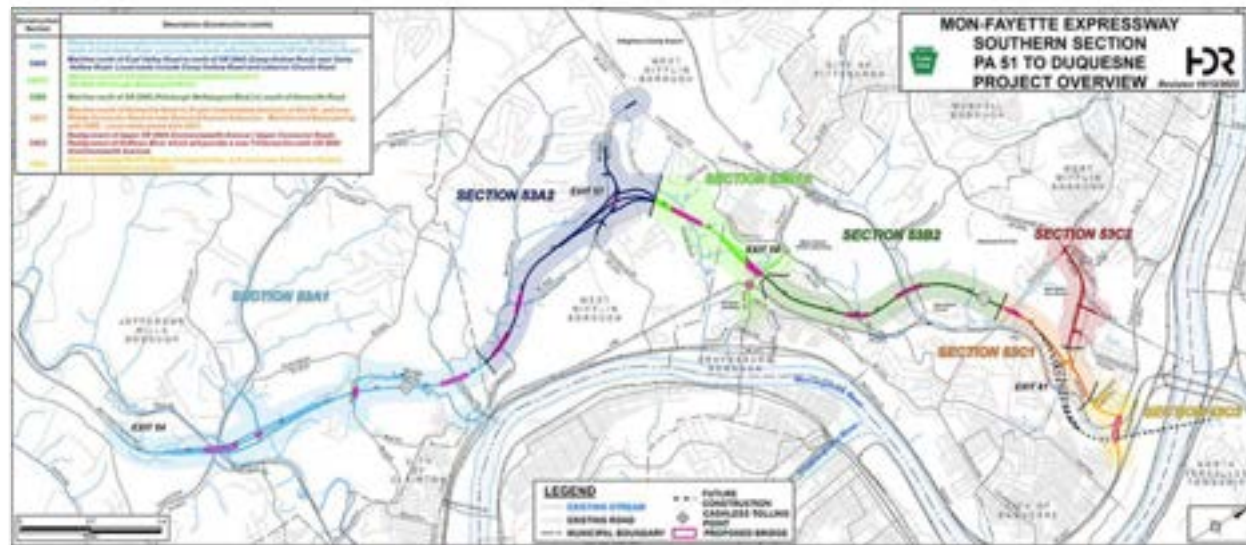
Absorptive Noise Walls



Energy Harvesting Geogrids



Electrified Roadway Strategic Plan



- Ensure Material Quality
- Evaluate Our Specifications
- Test New Innovations



The PA Turnpike Commission consistently outperforms our peers in the safety and reliability of our roadway.



Crash Rates



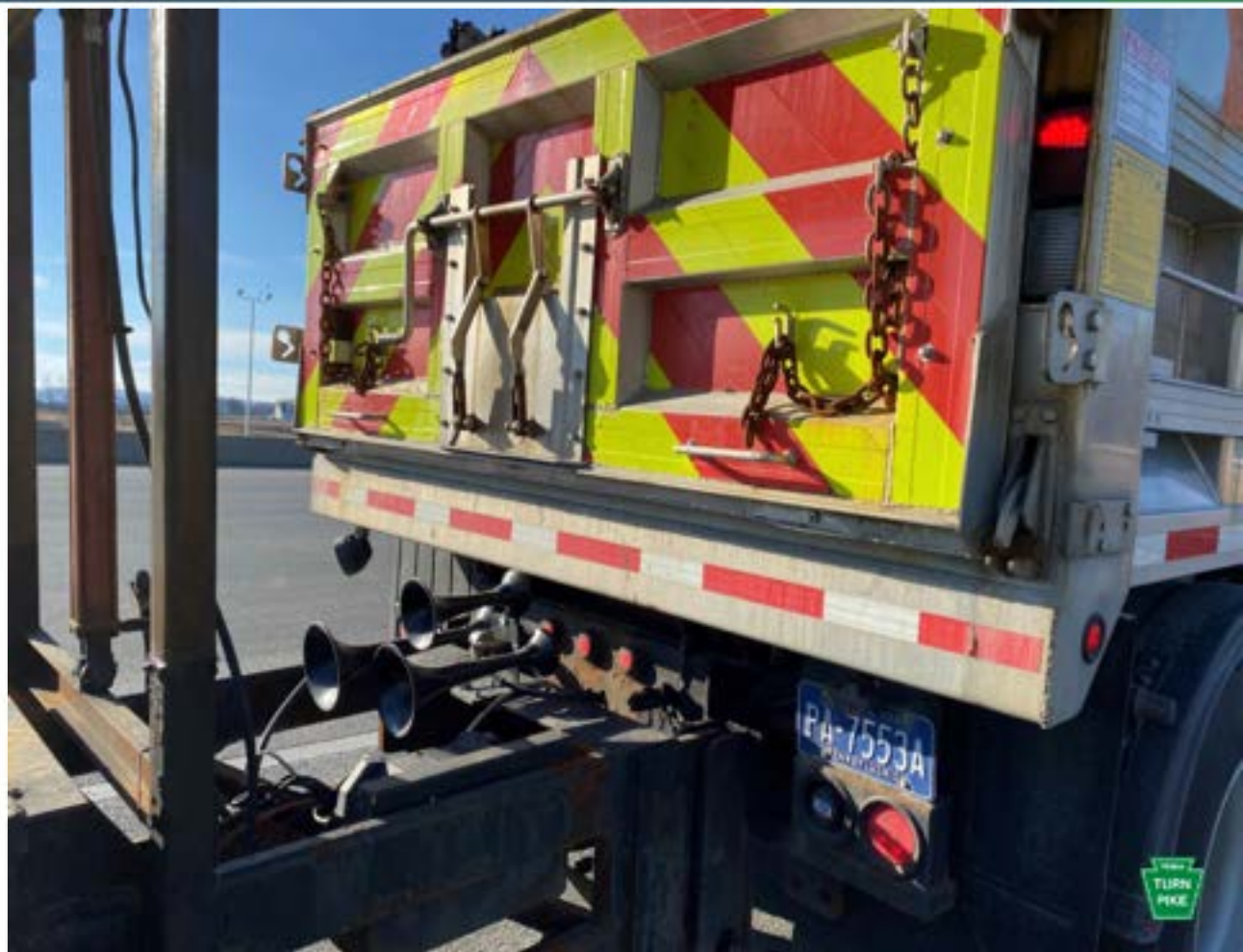
Work Zone Safety



Incident Clearance Rates



- 2023 Pilot Program to alert motorists if they are approaching the TMA too quickly
- 4 TMA air horns
- Continuing to refine to improve automation



- PennSTART marks a collaborative venture between the Pennsylvania Department of Transportation (PennDOT), the Pennsylvania Turnpike Commission, Regional Industrial Development Corporation (RIDC) of Southwestern PA, Carnegie Mellon University, and Westmoreland County
- This state-of-the-art facility is set to empower emergency responders, transportation technology companies, and research institutions, fueling economic growth and innovation





Traffic Incident Management

- Law Enforcement / Fire / Rescue / EMS
- Towing & Recovery / Public Works / Utilities
- Unmanned Aerial Vehicles (Drones Application Training)



Connected and Automated Vehicles

- Research Institutions
- Automotive & Equipment Manufacturers
- IT Data Solutions
- Railway & Intersection Safety



ITS / Tolling Technologies

- Tolling Agencies
- EZPass Group
- Toll Tech Manufacturers & Integrators



Work Zone Safety

- Maintenance Workers
- Contractors
- OSHA and ANSI Work Zone Safety Training



Commercial Vehicles

- Motor Truck Carrier Association
- Bus and Motor Coach Association
- Manufacturers & Integrators



Transit Vehicles

- Federal Transit Administration
- State DOTs
- Transit Agencies
- Bus Technology Manufacturers



VISION FOR A SUSTAINABLE ROADWAY 2040



- SERVICE PLAZA
- MAINTENANCE FACILITY
- PTC ADMINISTRATIVE BUILDING
- EXIT
- ROADWAY
- MICROGRID/SOLAR
- IN-ROAD FIBER NETWORK
- CONNECTED VEHICLE TECHNOLOGY
- BURIED ELECTRIC TRANSMISSION LINES
- INDUCTIVE CHARGING
- SILENT WIND PLANT





Subscribe



Sign up to receive our
monthly e-Newsletter:
"The Road Ahead"

Follow



Connect with us on
Facebook, Instagram,
Twitter and LinkedIn

Request a Speaker



Check out
the PTC
Speakers' Bureau

Questions?

