



Pittsburgh: The University and the City

Founded in 1787, University of Pittsburgh is one of the leading universities in the United States and the world. The campus covers 132 acres in Oakland, an elegant university neighborhood with museums, parks, and great restaurants, and is home to nearly 5,000 faculty, 12,000 employees, and over 30,000 students. Remembering the echoes of its industrial past, Pittsburgh is reinventing itself as a center for high-tech businesses, medicine, higher education, and technology.



Heart of the Department of Bioengineering

Benedum Hall (left), home of the School of Engineering, is located next to the University of Pittsburgh Medical Center, in the heart of Oakland. The Center for Bioengineering (center), home of the department of Bioengineering, is a state-of-the-art facility, located in a new research park on the banks of the Monongahela River. The Biomedical Science Tower (right) is a newly constructed 10-story testament to the University's dedication to biotechnology.



University of Pittsburgh

Swanson School of Engineering
Department of Bioengineering
306 Center for Bioengineering
300 Technology Drive
Pittsburgh, PA 15219

Phone: 412-383-9713

www.engineering.pitt.edu/bioengineering
www.cbtp.pitt.edu

school of engineering

bioengineering

Getting to the heart of research Cardiovascular Bioengineering Training Program (CBTP)



Program Director

Sanjeev Shroff, PhD
Distinguished
Professor of and
McGinnis Chair in
Bioengineering;
Professor of Medicine
University of Pittsburgh



Program Co-Director

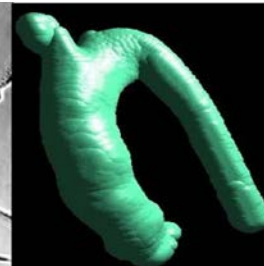
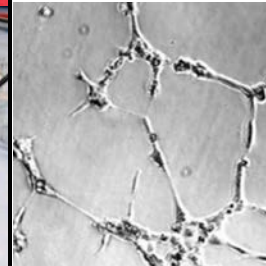
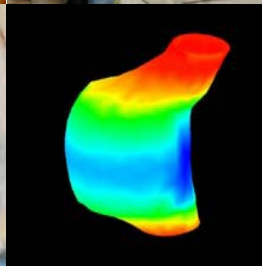
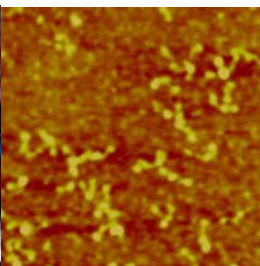
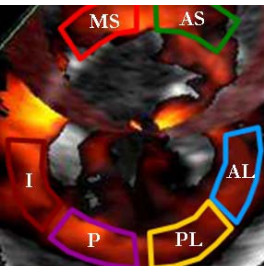
Harvey Borovetz, PhD
Professor
Bioengineering;
Hardesty Professor of
Surgery
University of Pittsburgh

The Department of Bioengineering, University of Pittsburgh, is supporting a doctoral training program aimed at educating talented students from engineering and other quantitative sciences for careers in biomedical research in the cardiovascular area.

The Department of Bioengineering at the University of Pittsburgh has been awarded a highly competitive Training Grant from the National Institutes of Health. We are soliciting applicants interested in a career in the broad area of cardiovascular bioengineering and pursuing a PhD degree in bioengineering.

PROGRAM FOCUS

- Basic understanding and quantitative characterization of native and perturbed (i.e., with deployment of man-made devices or constructs) cardiovascular function at various levels of organization (cell, tissue, whole organ).
- Imaging for functional assessment at various levels of organization.
- Design and optimization of artificial devices and constructs (mechanical, tissue-engineered, and hybrid).



CLINICAL ROTATIONS

One novel aspect of the program is that students are required to formally participate in a clinical experience (Clinical Internship and Rotation) in the following areas: Clinical Artificial Heart Program, Adult and Pediatric Cardiology, Critical Care Medicine, Radiology, Cardiology, and Vascular Surgery.

STUDENT SUPPORT

Awardees will receive support in the form of a monthly stipend, tuition scholarship, health insurance, and travel budget.

TO APPLY

For application forms and additional information please visit the CBTP web site at www.engineering.pitt.edu/CBTP or email Dr. Sanjeev Shroff at sshroff@pitt.edu. Must be U.S. citizen or permanent resident to apply.

PROGRAM FACULTY

- James Antaki, PhD
- Stephen Badylak, PhD, MD, DVM
- Harvey Borovetz, PhD
- Lance Davidson, PhD
- William Federspiel, PhD
- Mark Gladwin, MD
- Johnny Huard, PhD
- Marina Kameneva, PhD
- Kang Kim, PhD
- Steven Little, PhD
- Christopher O'Donnell, PhD
- Michael Pinsky, MD
- Partha Roy, PhD
- Guy Salama, PHD
- Richard Schaub, Jr., PhD
- Sruti Shiva, PhD
- David Schwartzman, MD
- Sanjeev Shroff, PhD
- Prithu Sundd, PhD
- George Stetten, MD, PhD
- Kimimasa Tobita, MD, PhD
- Rocky Tuan, PhD
- Florideliza Villanueva, MD
- David Vorp, PhD
- William Wagner, PhD
- James Wang, PhD
- Yadong Wang, PhD
- Stephen Winowich, BS